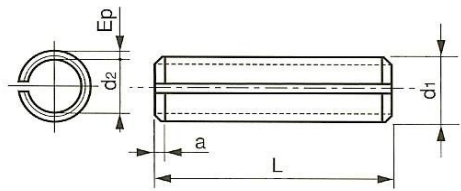


## GOUPILLE ELASTIQUE SERIE EPAISSE

SPRING PINS HEAVY TYPE

INOX A2 - 304  
DIN 1481 - ISO 8752



<b>a min</b>	0.35	0.5	0.65	0.9	1.2	2
<b>d1</b>	2.3	3.3	4.4	5.4	6.4	8.5
<b>d2</b>	1.5	2.1	2.8	3.4	3.9	5.5
<b>Ep</b>	0.4	0.6	0.8	1	1.25	1.5

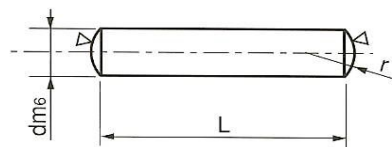
<b>L \ d</b>	<b>2</b>	<b>3</b>	<b>4</b>	<b>5</b>	<b>6</b>	<b>8</b>
<b>10</b>	*	*	*			
<b>16</b>	*	*	*	*	*	*
<b>20</b>	*	*	*	*	*	*
<b>28</b>			*	*	*	*
<b>30</b>		*	*	*	*	*
<b>36</b>			*	*	*	*
<b>40</b>		*	*	*	*	*
<b>50</b>			*	*	*	*
<b>60</b>				*	*	*
<b>70</b>				*	*	*
<b>80</b>					*	*

Prix Nets HT les 100 pièces en euros

## GOUPILLE CYLINDRIQUE

CYLINDRICAL PINS

INOX A2 - 304  
DIN 7 - ISO 2338



<b>r =</b>	2	3	4	5	6	8
<b>L \ d</b>	<b>2</b>	<b>3</b>	<b>4</b>	<b>5</b>	<b>6</b>	<b>8</b>
<b>10</b>	*	*	*	*	*	*
<b>16</b>	*	*	*	*	*	*
<b>24</b>	*	*	*	*	*	*
<b>32</b>	*	*	*	*	*	*
<b>40</b>			*	*	*	*
<b>50</b>				*		104.88 €

Prix Nets HT les 100 pièces en euros